



AGRI4FUTURE

ROMÂNIA - OBIECTIV 2035

CONFERINȚA NAȚIONALĂ
A CLUBULUI FERMIERILOR ROMÂNI

**STRENGTHENING AGRICULTURAL RISK
PREPAREDNESS IN ROMANIA
INSIGHTS FROM URUGUAY'S EXPERIENCE**

**HOLGER KRAY,
MANAGER REGIONAL PENTRU AGRICULTURĂ ȘI ALIMENTAȚIE,
EUROPA & ASIA CENTRALĂ**

9 OCTOMBRIE 2025

Strengthening Agricultural Risk Preparedness in Romania

Insights from Uruguay's Experience



Holger Kray,
Regional Manager for Agriculture and Food for the Europe
and Central Asia Region
World Bank Group



Faced with increasing ag risks, Romania needs to boost its preparedness, while making the most of the post-2027 CAP.

- *Drought is the main risk affecting Romanian farmers:*
Romania's average annual loss (AAL) is estimated to approach EUR 2 billion. In absolute terms, it is comparable to Germany, a much larger economy; in relative terms (% of GDP), it is in the highest EU range. Romania is also expecting one of the highest absolute increases of crop AAL among EU members in future climate scenarios. Drought accounts for 60% of Romania's ag perils.
- *Romania urgently needs a better and an integrated ag risk management framework. This involves:*
 - *A comprehensive ag sector risk assessment.*
 - *Choice of effective risk management mechanisms, with proper articulation between instruments.*
 - *A strong foundations: "data, data, data!" and farmer awareness.*



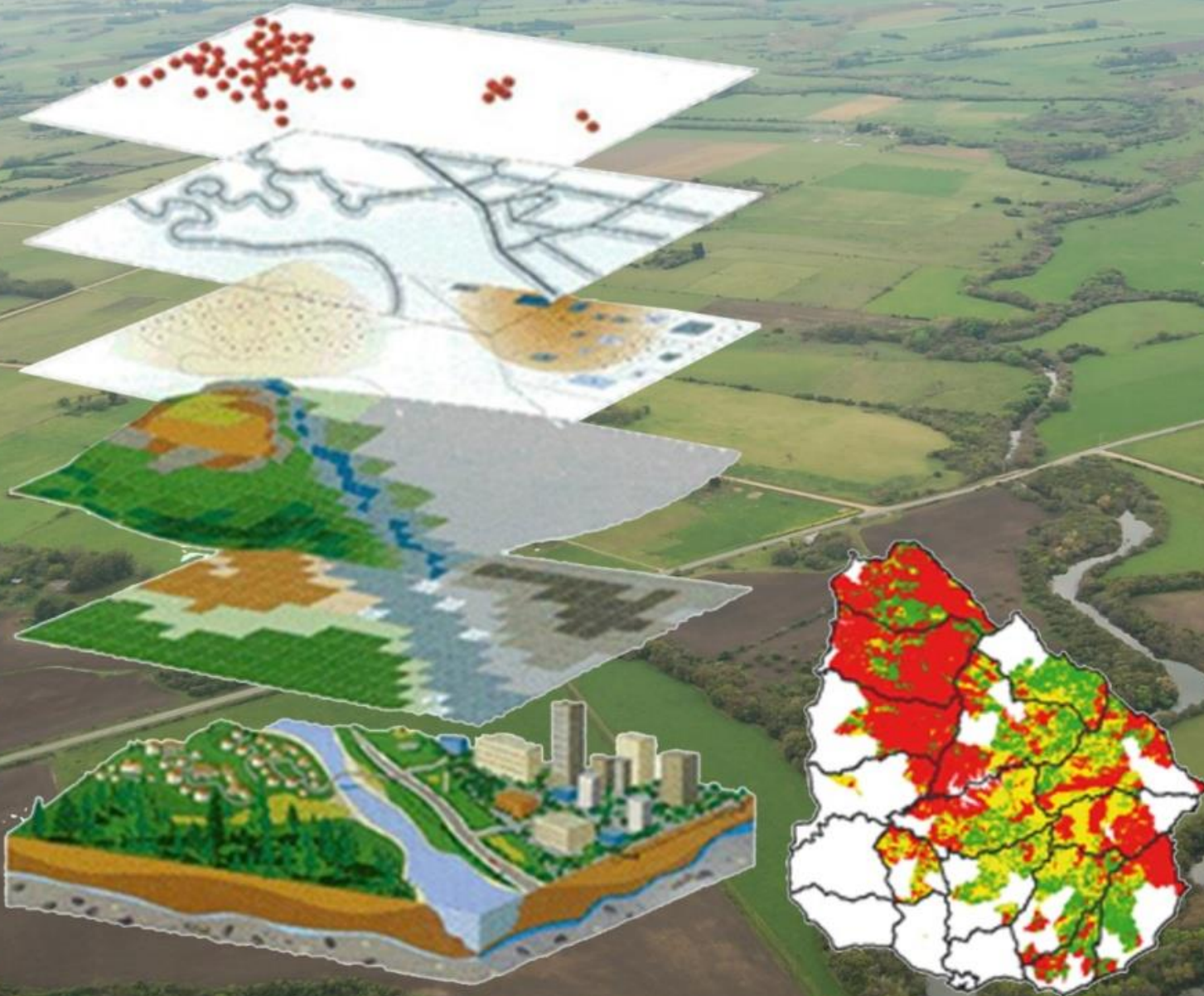
Insights from Uruguay's Integrated Ag Data Systems and how They can be Used for Better ARM





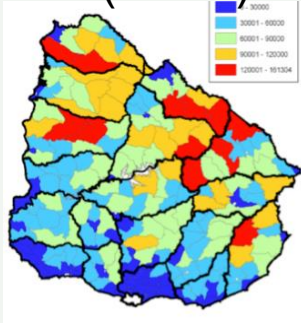
Uruguay National Agricultural Information System

An integrated platform pools together soil and farmer systems/registers, animal and plant information systems, and climate information to provide data and products to different stakeholders.



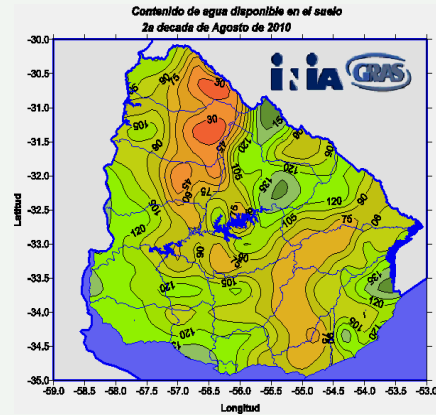
This helps predict, assess and respond better and faster to any risks and emergencies.

Monitoring Stock (SNIG)

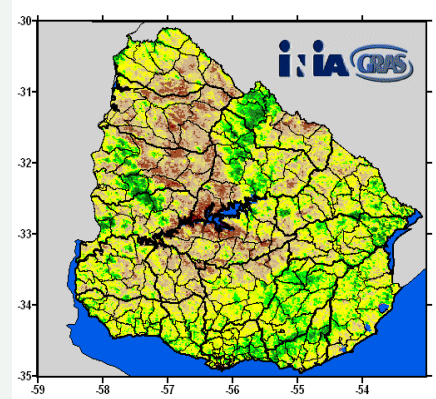


MODIS/LTDR satellite data

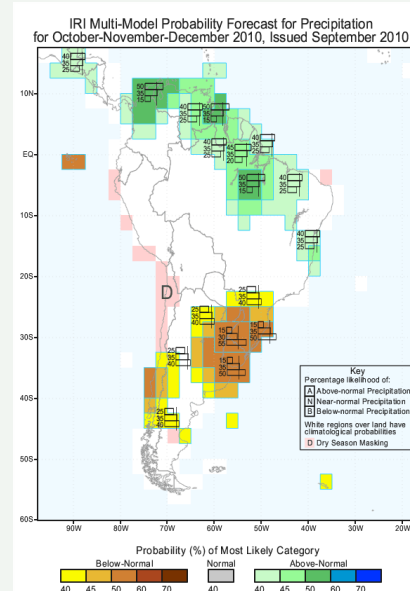
Monitoring and Forecasting Water Balance



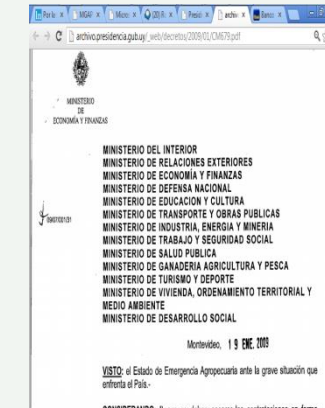
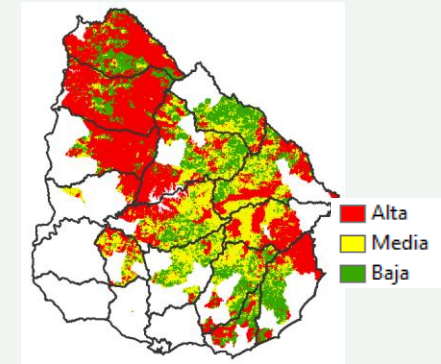
Monitoring and Forecasting Pastures



Prognosis IRI Climate Change Columbia University (3 months)



Risk Maps



ACTION
Alerts, Emergency Declaration,
instrument activation,
Planning & Development



Discussion
