

FROM AGRICULTURE,  
PRECISION

THE FIRST TECHNOLOGICAL HUB SERVICING ITALIAN AGRICULTURE

**BONIFICHE  
FERRARESI**

 **IBIF**  
AGRICOLTURA DI PRECISIONE

 **isma**

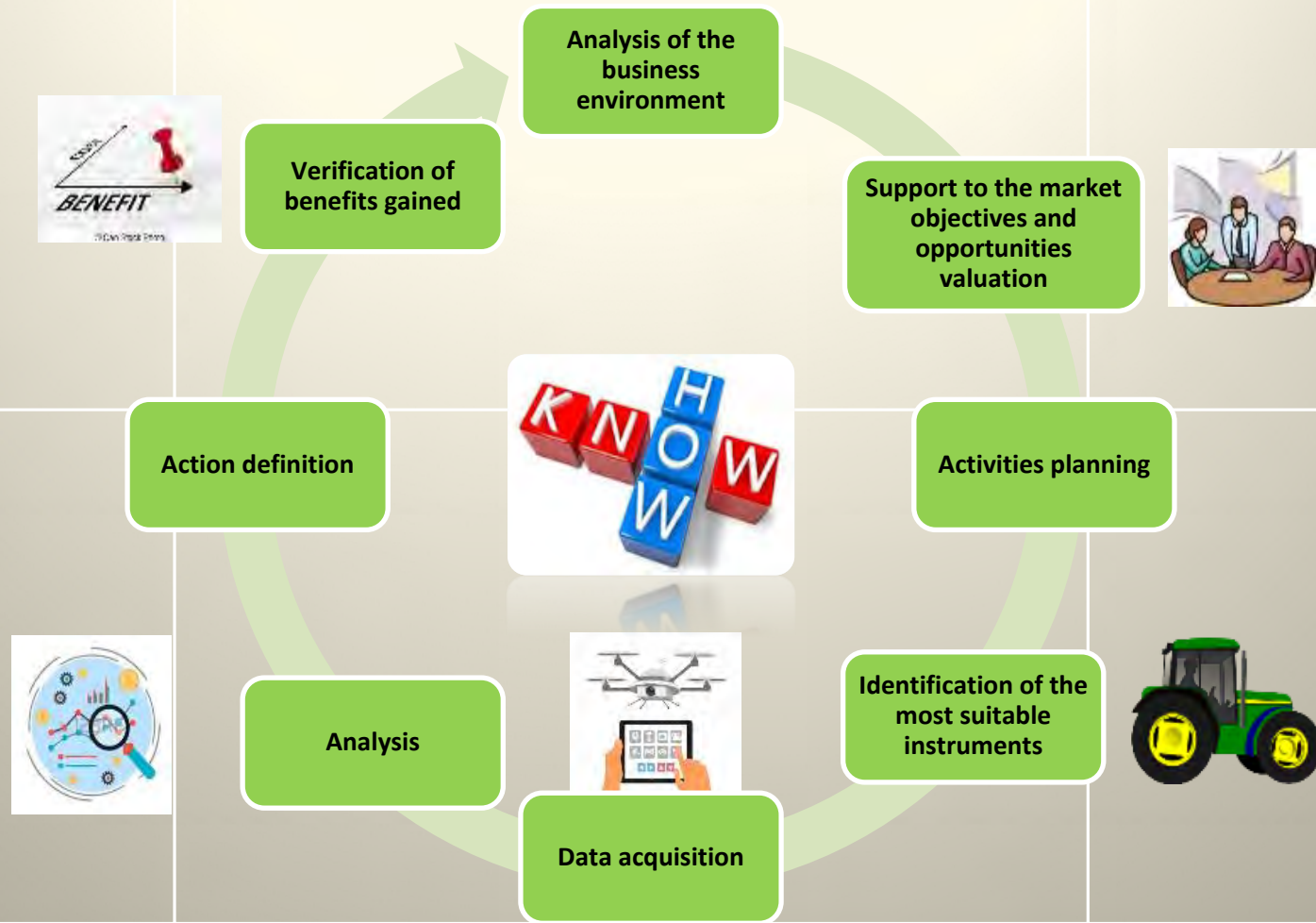
## WHO WE ARE

IBF Servizi is a company born from the partnership between Bonifiche Ferraresi and ISMEA to provide precision farming services to Italian agricultural companies aimed at enhancing companies' competitiveness in terms of cost reduction, production quality improvement and increase in the environmental impact standards.

BONIFICHE  
FERRARESI



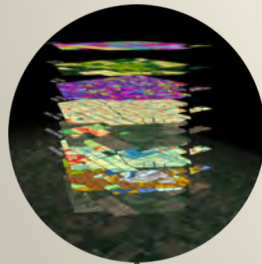
# OUR SYSTEMIC APPROACH





# OUR ACTIVITIES

FIELDS DIGITALIZATION AND  
SOIL MAPPING



1

CROP FIELDS SUITABILITY



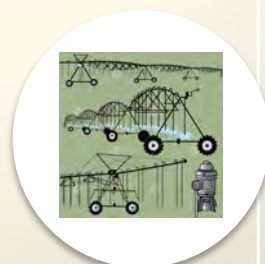
3

SOWING/TRANSPLANTING



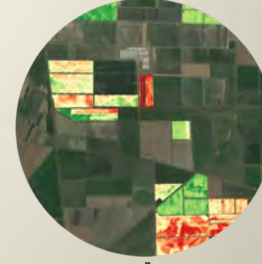
5

IRRIGATION



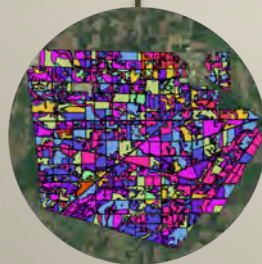
7

YIELD MAPS



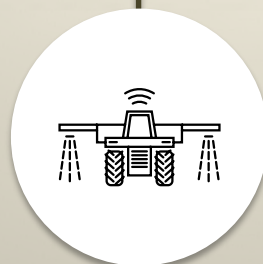
9

2



HOMOGENEOUS ZONES  
CHARACTERIZATION

4



FERTILIZATION

6

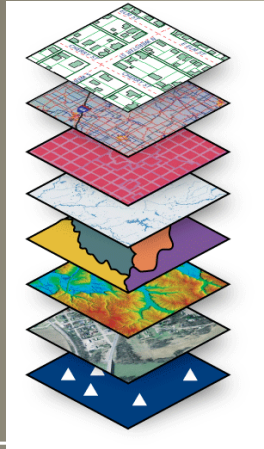


CROP MONITORING

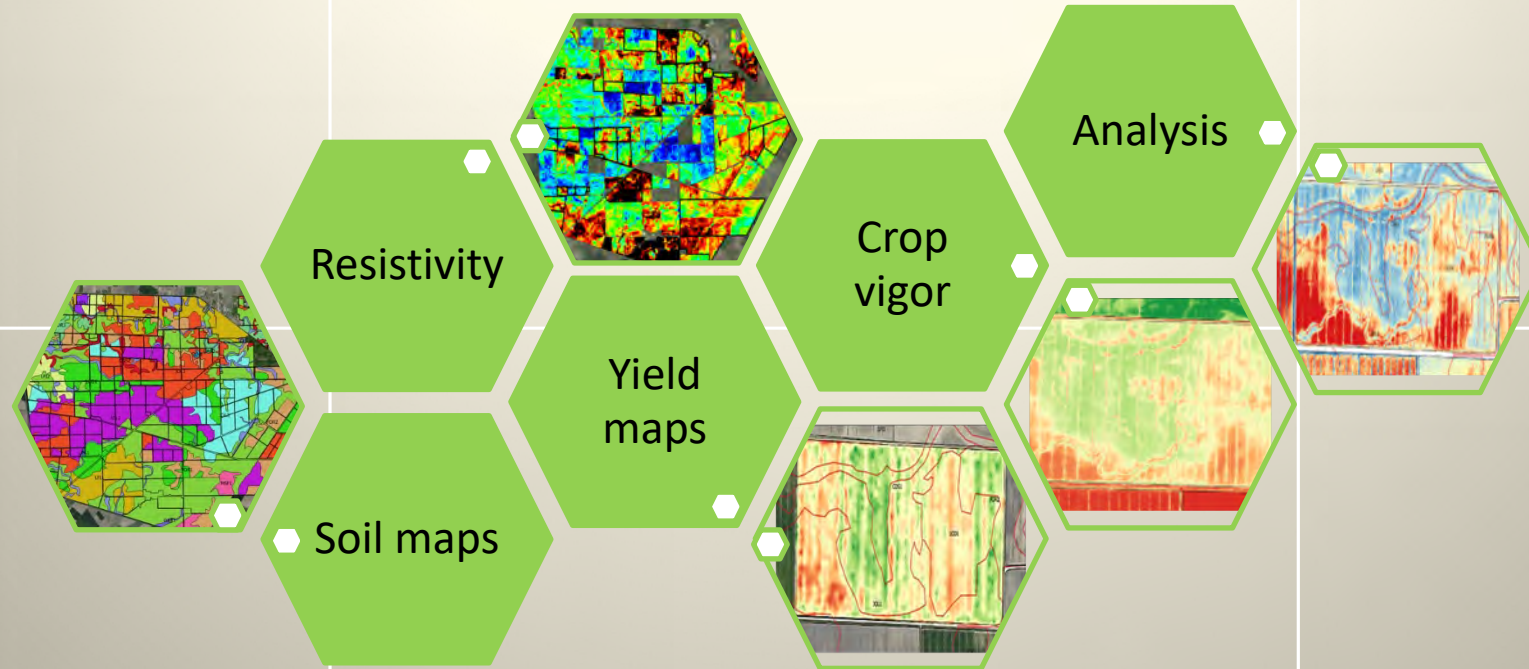
8



CROP PROTECTION



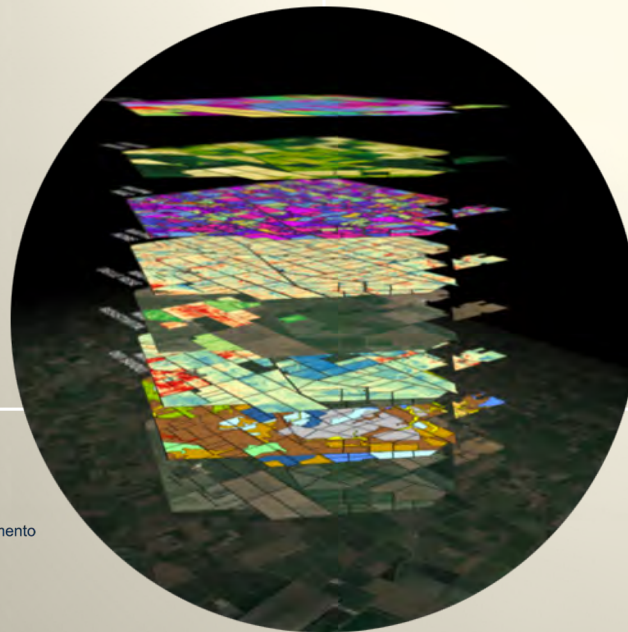
## Identification and analysis of in-field variability



From analysis to decision: prescription maps

# FROM DATA GATHERING

**GEOREFERENTIATION AND SOIL  
MAPPING**  
IN PARTNERSHIP WITH CNR



**DATA GATHERING  
FROM DIFFERENT  
SOURCES AND  
ANALYSIS**



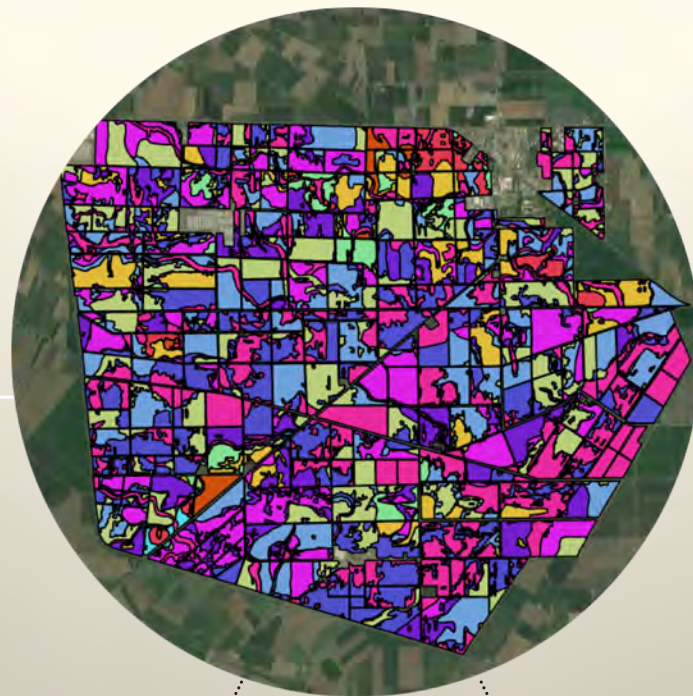
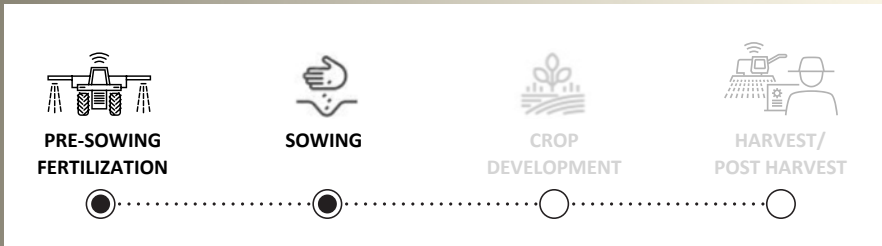
**CHEMICAL-PHYSICAL  
ENVIRONMENTAL ANALYSIS**

**MUZ**

**CREATION  
OF HOMOGENEOUS ZONES**



# TO HOMOGENEOUS ZONES CREATION AND AGRONOMIC APPLICATION

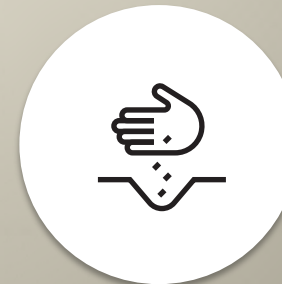


**DEFINITION OF PRECISION  
AGROPRACTICES WITH VRT (VARIABLE  
RATE TECHNOLOGY) APPLICATION**

PRE-SOWING  
FERTILIZATION



**MUZ**  
HOMOGENEOUS ZONES  
STABLE OVER TIME



SOWING



# FROM CONSTANT MONITORING OF THE CROP



PRE-SOWING  
FERTILIZATION



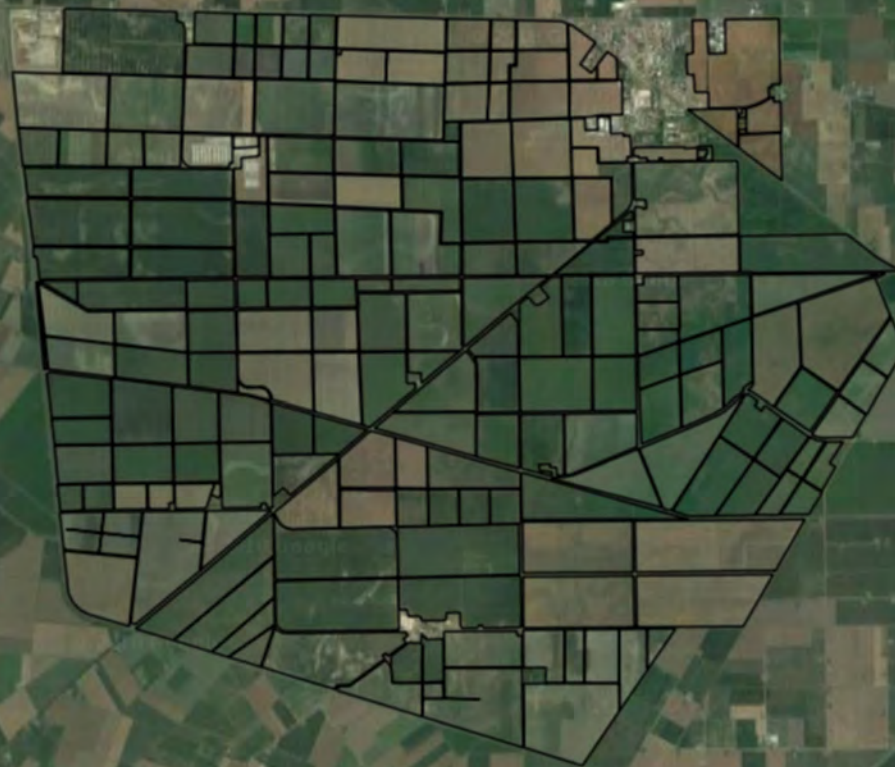
SOWING



CROP  
DEVELOPMENT



HARVEST/  
POST HARVEST



## SATELLITE MONITORING OF THE CROP DEVELOPMENT AND HEALTH IN PARTNERSHIP WITH CNR

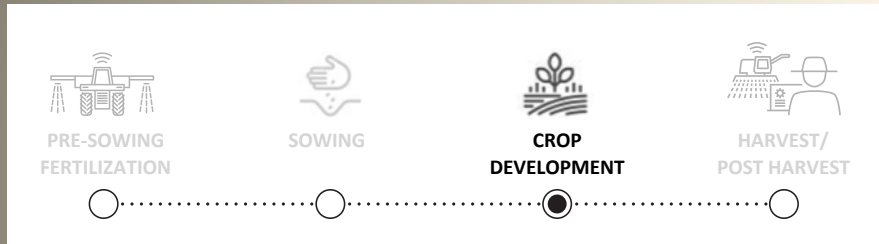


istituto per il rilevamento  
elettromagnetico  
dell'ambiente





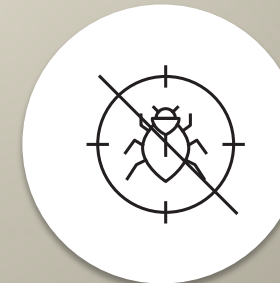
# FROM CONSTANT MONITORING OF THE CROP



## SATELLITE MONITORING OF THE CROP DEVELOPMENT AND HEALTH IN PARTNERSHIP WITH CNR



TOP DRESSING/FERTILIZATION



THROUGH ANALYSIS OF FORECASTING MODELS DEVELOPED IN PARTNERSHIP WITH ACCADEMIC EXPERTS IT IS POSSIBLE TO ANTICIPATE PATHOGENIC ATTACKS AND DEPLOY PHYTOSANITARY TREATMENTS



# TO BETTER QUALITATIVE AND QUANTITATIVE YIELD RESULTS



YIELD MAPS



ALLOW DETAILED PRODUCTIVITY ANALYSIS



BECOME ELEMENTS THAT ENRICH HISTORICAL DATA AND ALLOW TO IMPROVE FORECASTING ABILITY OF MODELS



MEASURE QUALITY PARAMETERS OF THE HARVEST



2017-06-01      Analizza      06:32 PM	
DW231166 Grano Duro	
Proteine (SS)	15.4
Umidita	10.5
Glutine Umido (14%)	36.2
Peso specifico	78.2
ID campione	DI FIORE INCORONATA
Selezione A	Flusso

JOLANDA DI SAVOIA  
MARCO AURELIO VARIETY  
JULY 2017

Prod. Grano Duro	
ID Campione ovidio w1	
Umidita %	P.S. (kg/hl)
11.59	79.80
Proteine %ss	Glutine Umido %
15.54	35.19

JOLANDA DI SAVOIA  
OVIDIO VARIETY  
JULY 2017

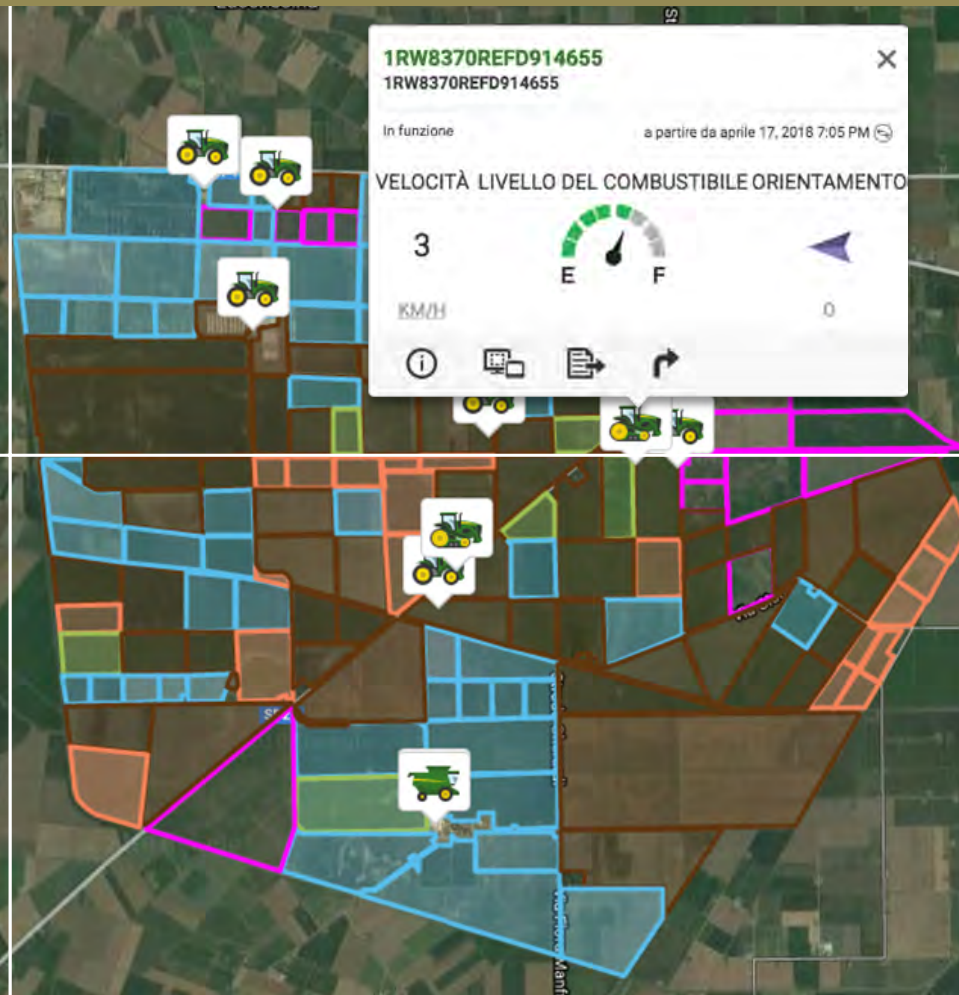


# INFORMATION TRACEABILITY



ALL THE INFORMATION ARE STORED IN CLOUD AND MADE AVAILABLE THROUGH A SPECIFICALLY DEVELOPED WEB PORTAL, GET-IT AGRI

EVERY PHASE IS REGISTERED AND TRACEABLE AND ALLOWS TO CERTIFY THE PRODUCTION PROCESS



# TRACEABILITY OF THE WHOLE VALUE CHAIN





T H A N K  
Y O U

BONIFICHE  
FERRARESI

IBF  
AGRICOLTURA DI PRECISIONE

isma